

Uni-10 Series

PC BASED PRICE COMPUTING SCALE WITH
PRINTER AND COLOR TOUCHSCREEN



RICE LAKE
RETAIL SOLUTIONS

ISHIDA

800-472-6703

www.ricelake.com/retail

Simple and Efficient Operation

PC-based operation allows for faster response and remote support access.

Durable Control Panel

The Ishida Uni-10 retail scale provides more flexibility and features to ensure you have complete control. Grocery stores require employees to wear gloves when directly handling food. The Uni-10's resistive touch panel provides control for operators wearing gloves without sacrificing durability. The scale's control panel has a flat design, making it easy to clean and sanitize.

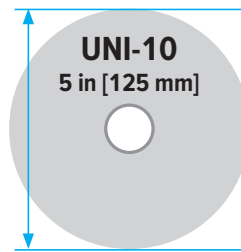
The Uni-10 has a 12.1-inch operator display for more visibility and to view larger graphics.

Large Weighing Platform

The Uni-10 has a generous weighing platform to ensure products do not hang over the edge, providing more accurate and accurate and reliable weighments. The rectangular platter of the hanging scale supports oversized items such as whole fish, large cuts of meat, deli platters and more.

Expansive Label Roll Capacity

With a 5-inch label roll capacity, the front-load label cassette allows operators to easily change labels in a comfortable position, making it easy to quickly load labels, even during busy times.



FDA Nutrition Labeling

The Uni-10 is compliant with the latest nutrition label requirements. According to the FDA, new labels reflect current scientific evidence leading to a healthier lifestyle.



12.1 inch display



Flexible bar code structures

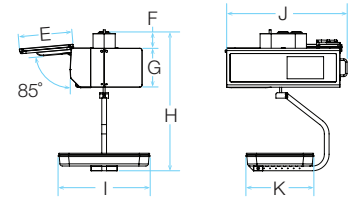
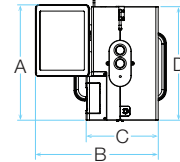
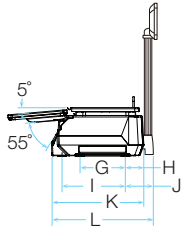
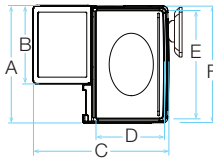
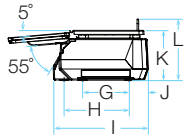
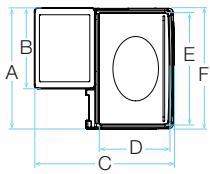
Supports Various Fonts



POLE **BENCH** **HANGING**

Uni-10 Series

PC BASED PRICE COMPUTING SCALE WITH
PRINTER AND COLOR TOUCHSCREEN



BENCH TYPE (B) DIMENSIONS					
A	17.8 in (453 mm)	F	17.7 in (450 mm)	J	2.8 in (72 mm)
B	11.9 in (303 mm)	G	6.9 in (174 mm)	K	7.4 in (188 mm)
C	20.6 in (523 mm)	H	9.6 in (243 mm)	L	9.1 in (231 mm)
D	10.4 in (263 mm)	I	14.0 in (355 mm)	M	16.5 in (420 mm)
E	16.5 in (420 mm)				

POLE TYPE (P) DIMENSIONS					
A	17.8 in (453 mm)	G	6.9 in (174 mm)	M	16.5 in (420 mm)
B	11.9 in (303 mm)	H	2.8 in (72 mm)	N	7.4 in (188 mm)
C	22.7 in (576 mm)	I	9.6 in (243 mm)	O	9.1 in (231 mm)
D	10.4 in (263 mm)	J	4.3 in (110 mm)	P	23.1 in (586 mm)
E	16.5 in (420 mm)	K	14.0 in (355 mm)	Q	5.4 in (136 mm)
F	17.7 in (450 mm)	L	15.5 in (394 mm)	R	7.6 in (192 mm)

HANGING TYPE (H) DIMENSIONS					
A	19.2 in (487 mm)	E	9.0 in (228 mm)	I	14.6 in (370 mm)
B	20.5 in (520 mm)	F	2.8 in (70 mm)	J	20.1 in (510 mm)
C	12.0 in (305 mm)	G	6.5 in (165 mm)	K	10.6 in (270 mm)
D	18.9 in (480 mm)	H	23.3 in (593 mm)		

STANDARD FEATURES

- Top seller (scheduled/real-time)
- Time stamp for data credibility
- Production transaction
- Designer fonts
- New nutrition label compatibility
- Data distribution
- Color printer connectivity
- Secured Remote Service
- 6,000 characters per item support
- Calendar entry for date change
- Video functions
- DHCP connectivity
- Dynamic search
- Flexible bar code structures
- Multi-department
- OS security maintenance
- Filter for third-party driver communication
- Flexible and expanded preset key layout
- Adjustable customer side message
- Logo checking field
- Additional information display key (ex. Can be used for allergen search, receipt, suitable wine)
- Up to 99 USB backup folders
- Self Service mode is available for any bench, pole or hanging scale

OPTIONS/ACCESSORIES

- 221032 additional label cassette

PART NUMBERS AND MODEL DESCRIPTIONS

Part #	Uni-10 Model Description
220028	Bench
TBD	Pole
220029	Hanging

SPECIFICATIONS

SCALE UNIT

CAPACITY/DIVISION: 0-15 lb × 0.005 lb / 15-30 lb × 0.01 lb (multi-interval)
0-30 lb × 0.01 lb (single range)
0-6 kg × 0.002 kg / 6-15 kg × 0.005 kg (multi-interval)
0-15 kg × 0.005 kg (single range)

SCALE PLATTER SIZE:

Bench / Pole: 16.5 × 10.4 in (420 × 263 mm)
Hanging: 14.6 × 10.6 in (370 × 270 mm)

DISPLAY

SIZE: Operator side: backlit 12.1 in XGA (1024 × 768) TFT color LCD
Customer side: backlit 7 in WVGA (800 × 480) TFT color LCD
Resistive thin film type analog touch panel

SYSTEMS:

PRINTER

MEDIA TYPE:

MEDIA SIZE:

Die cut label / continuous label / receipt
Outside diameter of roll: max. 5.0 in (125 mm) or less
Inner core diameter: 40 mm +/- 1 mm (1.6 in)
Width: 30-80 mm (+2 mm with backing paper)
Length: 20-300 mm

CASSETTE:

THERMAL HEAD:

RESOLUTION:

SPEED OF PRINTING:

PRINTING WIDTH:

PRINTING LENGTH:

BAR CODE TYPE:

CONTROL

I/O PORT:

OS:

COMMUNICATION:

Front-load type label cassette
3 in
12 dot/mm (300 dpi)
Max: 120 mm/sec
Max: 78 mm
Max: 300 mm
JAN, EAN, EAN128, CODE128, UPC, ITF, GS1 and QR
TCP/IP and USB
Linux
Ethernet, built-in RF bridge (WEP/WPA/WPA2)

APPROVALS:



SALES AND TECHNICAL ASSISTANCE

RICE LAKE
WEIGHING SYSTEMS

HEADQUARTERS

230 West Coleman Street
Rice Lake, Wisconsin 54868 - USA
Tel: (715) 234 9171 | Fax: (715) 234 6967
www.ricelake.com