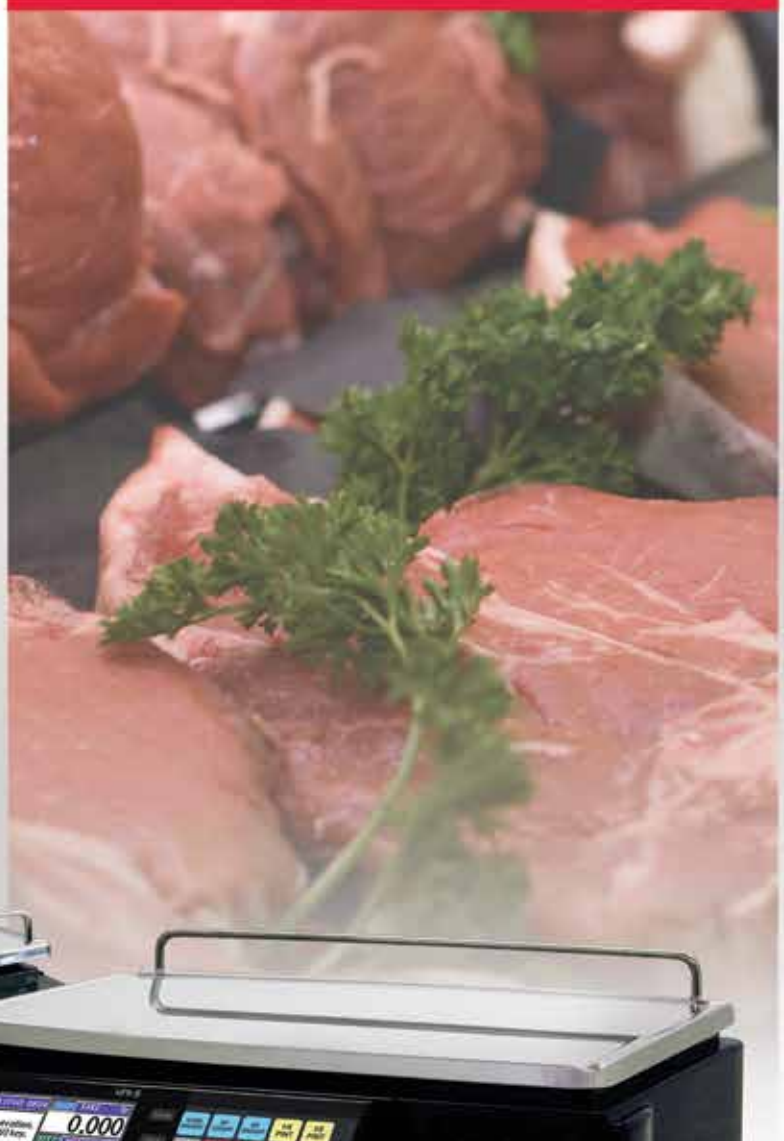


Uni-5 Series

PRICE COMPUTING SCALE
with PRINTER
and COLOR TOUCHSCREEN



Pole model



Bench model



CERTIFIED SCALE, INC.
INDUSTRIAL & LABORATORY WEIGHING SOLUTIONS

WWW.CERTIFIEDSCALE.COM | 262.781.9290

www.certifiedscale.com

Uni-5 Series

PRICE COMPUTING SCALE
with PRINTER
and COLOR TOUCHSCREEN



Value by design

Ishida's Uni-5 Series of price-computing scales and printers are one of the best values in retail weighing today. Retail customers may choose from three distinct printer and scale-base configurations—all with the same easy-to-use universal control panel.

Whether selecting the straightforward bench model, bench with pole, or elevated head style, Uni-5 users can appreciate a large, full-color touchscreen, while customers view advertised specials and details of their purchase on an ultra-bright customer-side LCD.

The Uni-5 is more than just attractively priced. It's also attractive in design, with a polished, black polymer housing that's easy to clean, and a convenient side-loading printer for quick label changing. A low-profile design and green energy consumption round out a long list of essential features for today's progressive retail marketplace.



Elevated keyboard and displays model

Standard Features

- Large color touchscreen
- Dual-range weighing
- Side-load labels
- Internal wireless communications
- Ethernet communications
- Up to 99 pages of speed keys
- Adjustable touchscreen viewing angle
- 77 tactile keys
- 4 MB of memory
- Grayscale LCD customer-side display
- 30+ selectable fixed bar code formats
- Compatible with third-party communication software, including Invatron's PLUM, ADC's InterScale and Droste's PCScale Manager



Options/Accessories

- ScaleLink Pro 5 scale management software, including label design, data back-up and remote diagnostics
- Seafood and produce platters

Specifications

Capacity:	0-15 lb x 0.005 lb / 15-30 lb x 0.01 lb (dual range)
Display:	Operator: Color LCD, 7 in Customer: Grayscale LCD, 7 in
Display Items:	Tare: Four-digits Unit price: Six-digits Weight: Five-digits Total price: Six-digits
Preset Keys:	1980: 20 x 99 pages
Memory Capacity:	4MB
Communications:	Static TCP/IP 10/100 Base T Ethernet Wireless WEP/WPA/WPA2
Interface:	USB port, back-up and restore only
Platter:	15.7 in x 10.8 in (398 x 275 mm)
Print Head:	Direct thermal 2.2 in head (56 mm)
Print Speed:	3.2 / 3.9 / 4.7 / 5.9 in/sec (80 / 100 / 120 / 150 mm/sec)
Label Size:	Width: 1.5-2.5 in (38-64 mm) Length: 1.5-7.9 in (38-200 mm)
Label Roll:	Inside diameter: 1.6 in (40 mm) min Outside diameter: 3.9 in (100 mm) max
Label Backing Paper:	Width: Up to 2.6 in (66 mm)
Power Supply:	AC100-240V, 50/60 Hz
Power Consumption:	Stand-by: 50W, In operation: 120W
Classification:	NTEP CC 07-099A2, UL listed
Warranty:	One-year limited warranty



CERTIFIED SCALE, INC.
INDUSTRIAL & LABORATORY WEIGHING SOLUTIONS

WWW.CERTIFIEDSCALE.COM | 262.781.9290

Certified Scale Inc.
N57 W13640 Carmen Avenue
Menomonee Falls, WI 53051 • USA
TEL: 262.781.9290
FAX: 262.781.1867

www.certifiedscale.com